

- SP** En (www.audioquest.com/DragonFly/Flight) están disponibles las instrucciones de instalación en español
- FR** Les instructions d'installation en français sont disponibles à l'adresse : www.audioquest.com/DragonFly/Flight
- DE** Konfigurationsanweisungen in deutscher Sprache finden Sie unter : www.audioquest.com/DragonFly/Flight
- NL** Instructies voor instellingen in het Nederlands beschikbaar op : www.audioquest.com/DragonFly/Flight
- CN** 中文的设置说明见 : www.audioquest.com/DragonFly/Flight
- JP** 日本語 のセットアップの指示は次のアドレスにアクセスしてください: www.audioquest.com/DragonFly/Flight
- KR** 한국어로 설정 안내 보기 : www.audioquest.com/DragonFly/Flight
- RU** Инструкции по настройке на русском языке имеются на сайте : www.audioquest.com/DragonFly/Flight
- IT** Le informazioni in italiano relative alla configurazione sono disponibili nel sito : www.audioquest.com/DragonFly/Flight
- PT** Instruções de configuração em português disponíveis em : www.audioquest.com/DragonFly/Flight
- PL** Instrukcje instalacji w języku polskim są dostępne pod adresem: www.audioquest.com/DragonFly/Flight
- TH** สามารถอ่านคำแนะนำในการติดตั้งเป็นภาษาไทยได้ที่ www.audioquest.com/DragonFly/Flight



DragonFly DAC – Flight Manual

This short manual will take you through the few simple steps required to set up your computer operating system so that sound from music, movies, web videos, etc., will play through DragonFly with the best possible sound quality ... while your computer's chimes and alerts are played through the computer's onboard sound card and speakers. However, first we must discuss how to adjust volume, because this part of the guide is not computer specific.

Adjusting Volume Level

When using DragonFly with headphones, powered speakers, or a power amplifier, it's best to start at a low volume until the desired volume level is achieved. When using DragonFly in this "variable output mode" we recommend the following steps:

- Music player application (such as iTunes®) volume control should be set to maximum.

- Computer's main (operating system) volume control should be set to 25% of maximum.
- Adjust to desired volume using the computer's main volume control.

When the music player's volume is set to maximum and the computer's main volume control is used, DragonFly's onboard 64-position analog-domain volume control is able to preserve full resolution and maximum sound quality.

DragonFly is also capable of being employed as a traditional fixed-output source component (such as a CD, DVD or Blu-ray player), and can be connected to a standard input on a receiver or preamplifier. For this application, both the music player's volume control and the main operating system volume control should be set to maximum. This "fixed output mode" allows your audio or AV system's volume control to be in charge.

Mac OS X® Setup

Mountain Lion, Lion & Snow LeopardPage 4

DragonFly setup instructions show the latest Mac OS X Mountain Lion windows as there are no differences between Snow Leopard, Lion and Mountain Lion which would affect the setup process.

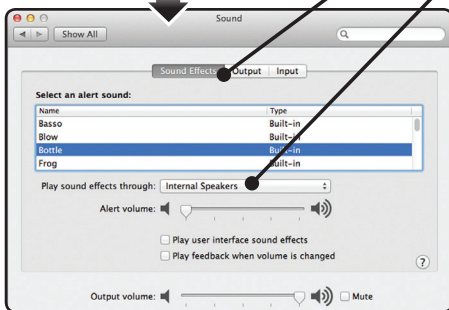
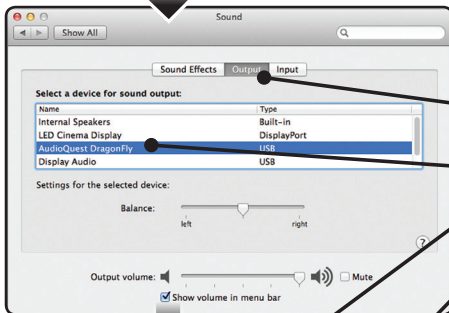
Windows® Setup

Windows 7Page 8

Windows XPPage 12


Currently, DragonFly is incompatible with Windows Vista. Microsoft is aware of incompatibility issues between the operating system and audio devices and is working towards a resolution. AudioQuest recommends using Windows XP or upgrading to Windows 7. For up-to-date information please visit audioquest.com/DragonFly/Vista

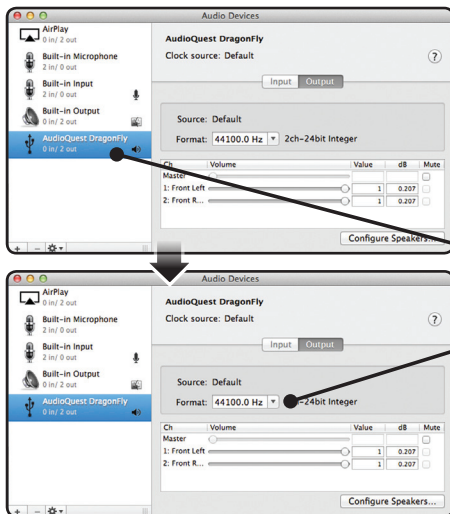
Mac OS X



Using “System Preferences”

to send audio to DragonFly, while keeping alerts and sound effects on the computer's speakers.

- Insert DragonFly into your computer's USB port.
- Open “System Preferences” from the Dock or from the Apple®  drop-down menu top left.
- Click on the “Sound” icon.
- In the Sound panel, click on the “Output” tab.
- Select “AudioQuest DragonFly”.
- Click on the Sound panel's “Sound Effects” tab.
- In the “Play sound effects through” menu, choose “Internal Speakers.”
- Close the window.



Setting up the “Audio MIDI Setup” so computer audio plays through DragonFly.

- Open the “Applications” folder, and then the “Utilities” folder.
- Within Utilities, double-click to open “Audio MIDI Setup.”
- Within the “Audio Devices” panel, click on “AudioQuest DragonFly.”
- Use the “Format” drop-down menu to choose a sample rate ... most likely 44100.0 Hz; please read the following explanation.

Why is “Format” important?

CD’s are 44100.0 Hz.

Compressed MP3 and AAC music files and audio streams are typically encoded at three different quality levels - 128kbps, 256kbps (iTunes Plus) and 320kbps - and most often reconstructed as 44100.0 Hz files.

Many music downloads and CDs ripped as Apple Lossless or FLAC files are reconstructed to 44100.0 Hz.

If you have higher resolution files, it is important to choose the correct higher sample rate in order to maximize the benefit of those files, and to direct the information to whichever of DragonFly’s two dedicated “clocks” is optimized for that sample rate.

Some programs (such as NPR) use 48000.0 Hz. These 24-bit/48000.0 Hz files can sound amazingly close to higher sample rate files.

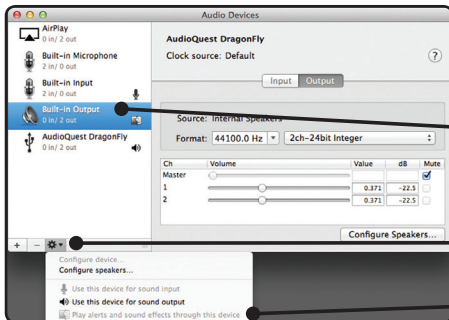
Some “high-res” files use 88200.0 Hz because it is a multiple of the CD standard sample rate.

Some “high-res” files use 96000.0 Hz because it is a multiple of the sample rates used on DVDs, Blu-rays and in the computer world.

DragonFly’s illuminated dragonfly lights up in different colors to indicate status or sample rate:


Red: Standby **Green:** 44100.0 Hz
Blue: 48000.0 Hz **Amber:** 88200.0 Hz
Magenta: 96000.0 Hz


Mac OS X - continued



Making certain that sound effects are routed to the computer's speakers and not to DragonFly.

• In the already open "Audio Devices" window, click first to highlight "Built-In Output."

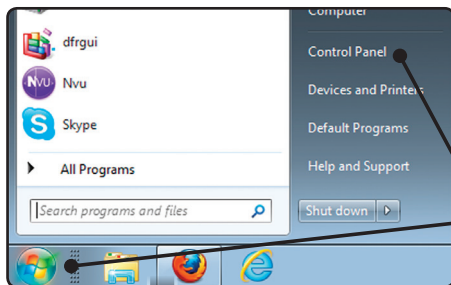
• Click on the gear icon  drop-down menu.

• Check that "Play alerts and sound effects through this device" is grayed out. If it is not, click to select it so the  now appears next to "Built-In Output."

Plug in earbuds, headphones, or a cable to your powered speakers or amplifier, and you are ready to listen!

Visit www.audioquest.com/DragonFly/Advanced for advanced computer audio setup guides which include tips, tweaks and techniques for getting the best computer audio-based sound from iTunes, as well as information and links to alternative music player applications such as JRiver, foobar2000, Pure Music, Decibel, and Amarra. You'll also find a listing of which electronics and devices are and are not compatible with DragonFly.

Windows 7



Using "Control Panel"

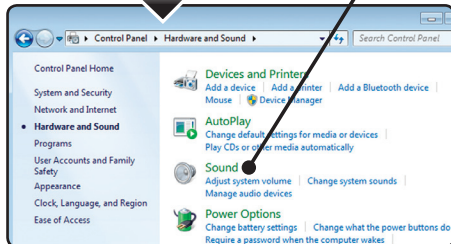
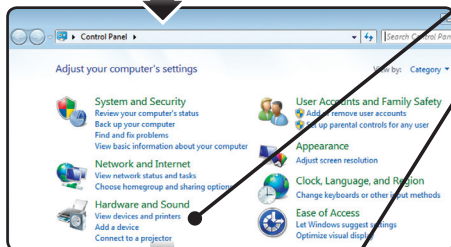
"Sound" settings to send audio to DragonFly, while keeping alerts and sound effects on the computer's speakers.

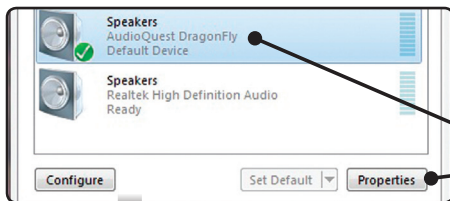
- Insert DragonFly into your computer's USB port.

Go to Start menu and launch "Control Panel."

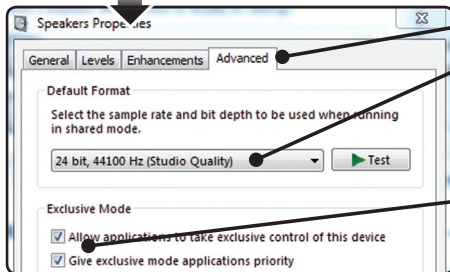
Open "Hardware and Sound" panel.

Select "Sound."





- The AudioQuest DragonFly is added as "Speakers." Ensure it is the "Default Device."
- Select "Speakers."
- Click "Properties" button for more setup options.



- Click "Advanced" tab.
- Use the dropdown menu to choose the sample rate ... most likely 24-bit, 44100 Hz; please read explanation below.
- For "Exclusive Mode," check both options then click "OK."

Why is "Format" important?

CD's are 44100 Hz.

Compressed MP3 and AAC music files and audio streams are typically encoded at three different quality levels - 128kbps, 256kbps (iTunes Plus) and 320kbps - and most often reconstructed as 44100 Hz files.

Many music downloads and CDs ripped as Apple Lossless or FLAC files are reconstructed to 44100 Hz.

If you have higher resolution files, it is important to choose the correct higher sample rate in order to maximize the benefit of those files, and to direct the information to whichever of DragonFly's two dedicated "clocks" is optimized for that sample rate.

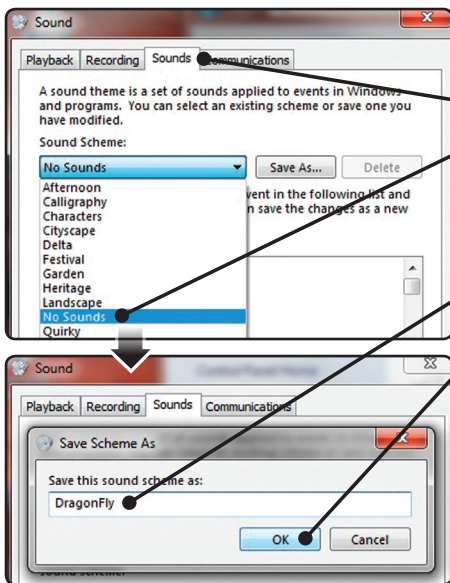
Some programs (such as NPR) use 48000 Hz. These 24-bit/48000 Hz files can sound amazingly close to higher sample rate files.

Some "high-res" files use 88200 Hz, but Windows 7 is not currently compatible with this sample rate. To play 88200 Hz music files, Windows 7 users must select 44100 Hz, 48000 Hz, or 96000 Hz with 44100 recommended as optimal. Windows-compatible alternative music players such as JRiver and foobar2000 will play 88200 Hz files at their native sample rate. For support or more information about these music players please visit jriver.com or foobar2000.org.

Some "high-res" files use 96000 Hz because it is a multiple of the sample rates used on DVDs, Blu-rays and in the computer world.

DragonFly's illuminated dragonfly lights up in different colors to indicate status or sample rate:

Red: Standby **Green:** 44100 Hz
Blue: 48000 Hz **Amber:** 88200 Hz
Magenta: 96000 Hz



Setting chimes and alerts to play through the computer's speakers and not DragonFly.

- Click "Sounds" tab.
- For "Sounds Scheme" select "No Sounds." This prevents chimes and computer alerts from playing back through DragonFly.
- Enter "DragonFly" as sound scheme (optional).
- Click "OK."
- Close window.

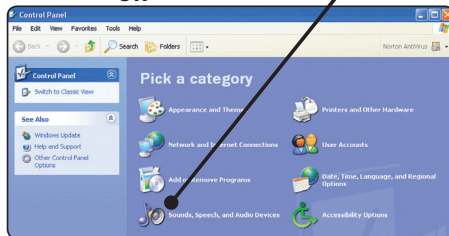
Plug in earbuds, headphones, or a cable to your powered speakers or amplifier, and you are ready to listen!

Visit www.audioquest.com/DragonFly/Advanced for advanced computer audio setup guides which include tips, tweaks and techniques for getting the best computer audio-based sound from iTunes, as well as information and links to alternative music player applications such as JRiver, foobar2000, Pure Music, Decibel, and Amarra. You'll also find a listing of which electronics and devices are and are not compatible with DragonFly.

Windows XP

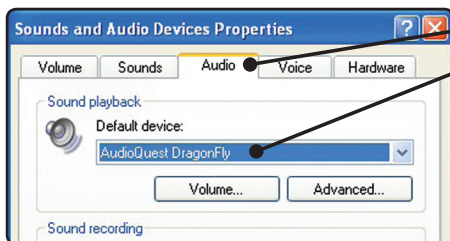


OR



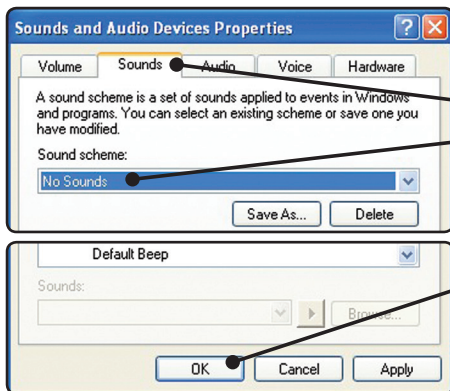
Setting “Sounds and Audio Devices” to send audio to DragonFly, while keeping alerts and sound effects on the computer’s speakers.

- Insert DragonFly into your computer’s USB port.
- Go to “Start” menu and launch “Control Panel.”
- If using Classic view, open “Sound and Audio Devices Properties” panel.
- If using Category view, open “Sounds, Speech, and Audio Devices,” then open “Sounds and Audio Devices.”



Select "Audio" tab.

In "Sound Playback," select Audioquest DragonFly as the "Default Device."



Setting chimes and alerts to play through the computer's speakers and not DragonFly.

Click "Sounds" tab.

For "Sounds Scheme" select "No Sounds." This prevents computer alerts and chimes from playing through DragonFly.

Click "OK."

Plug in earbuds, headphones, or a cable to your powered speakers or amplifier, and you are ready to listen!

Visit www.audioquest.com/DragonFly/Advanced for advanced computer audio setup guides which include tips, tweaks and techniques for getting the best computer audio-based sound from iTunes, as well as information and links to alternative music player applications such as JRiver, foobar2000, Pure Music, Decibel, and Amarra. You'll also find a listing of which electronics and devices are and are not compatible with DragonFly.

Getting the most from your DragonFly



3.5MM ↔ 3.5MM MALE,
3.5MM ↔ RCA,
RCA ↔ RCA,
3.5MM ↔ 3.5MM FEMALE

Available in these 8 performance levels:

TOWER

AUDIO INTERCONNECT

audioquest.

EVERGREEN

AUDIO INTERCONNECT

audioquest.

GOLDEN GATE

AUDIO INTERCONNECT

audioquest.

BIG SUR

AUDIO INTERCONNECT

audioquest.

SYDNEY

AUDIO INTERCONNECT

audioquest.

VICTORIA

AUDIO INTERCONNECT

audioquest.

YOSEMITE

AUDIO INTERCONNECT

audioquest.

ANGEL

AUDIO INTERCONNECT

audioquest.

©2012 AudioQuest 2621 White Road, Irvine CA 92614 USA
Tel (US): 949.585.0111 Tel (EU): +31.165.54.1404
www.audioquest.com

audioquest